



RECOMMENDATIONS FOR THE STUDY OF VULVAR PAIN IN WOMEN, PART 2: METHODOLOGICAL CHALLENGES



WHAT IS THIS PUBLICATION ABOUT?



Researching how to assess vulvar pain can be challenging. We published a paper to discuss methodological challenges for the assessment and measurement tools we recommended in a previous paper.

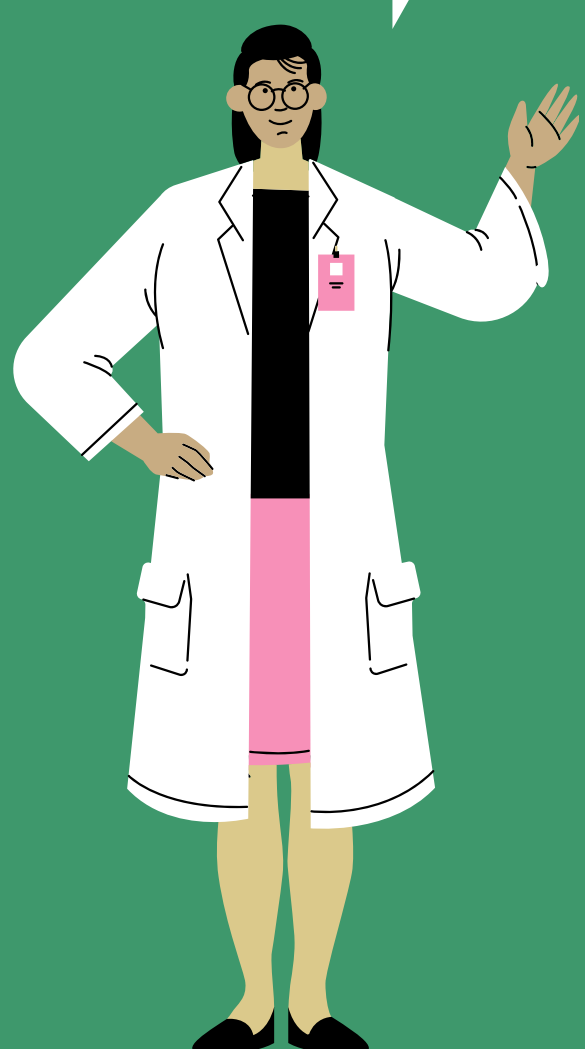
HOW DID WE GATHER INFORMATION?

We reviewed and discussed key challenges to conducting vulvar pain research and formulated recommendations for mitigating these challenges.



WHAT DID WE FIND?

We identified the following challenges in vulvar pain research: selection and sample biases, heterogeneity of the condition, inclusion of the partner, and neglect of the multidimensional aspects of vulvar pain.



A first key recommendation to mitigate these challenges is to be more careful with detailed tracking and characterization of research samples.



A second key recommendation is greater multidisciplinary collaboration to better capture the complexity of chronic vulvar pain.



This publication is impactful, as reflection upon methodological challenges facing clinical research of vulvar pain and ways to mitigate such challenges is crucial for improving the quality, generalizability, and uptake of research findings.

The information provided is based on the publication in the Journal of Sexual Medicine "Recommendations for the Study of Vulvar Pain in Women, Part 2: Methodological Challenges" (Rosen, Bergeron, & Pukall, 2020). Available at: <https://www.sciencedirect.com/science/article/abs/pii/S174360951931879X>